

Widfield Retinal Imaging Umbria 2021

Michael Wyss

M.Sc. Optometrist FAAO

eyeness ag, Bern / Switzerland

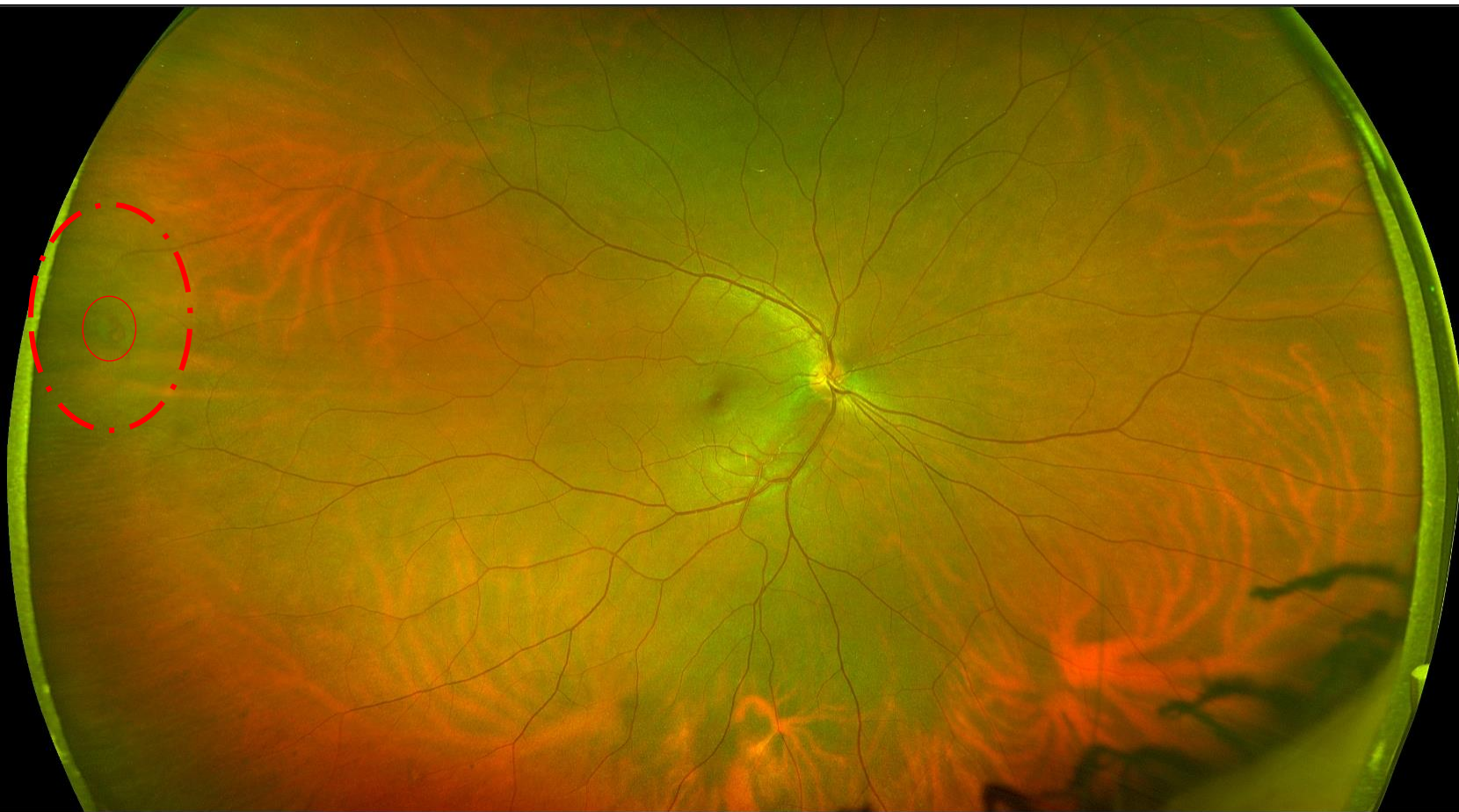
mwyss@eyeness.ch



Case 1

- YG, caucasian, female, age 34, myopia -3D OU
- Routine annual contact lens follow up and additionally tri-annually full optometric consultation
 - No complaints at all
 - Family Hx: negativ
 - Systemic Hx: negativ
 - Mx: Pregnant 24week, Vitamines

Objective Composite



Objective Green

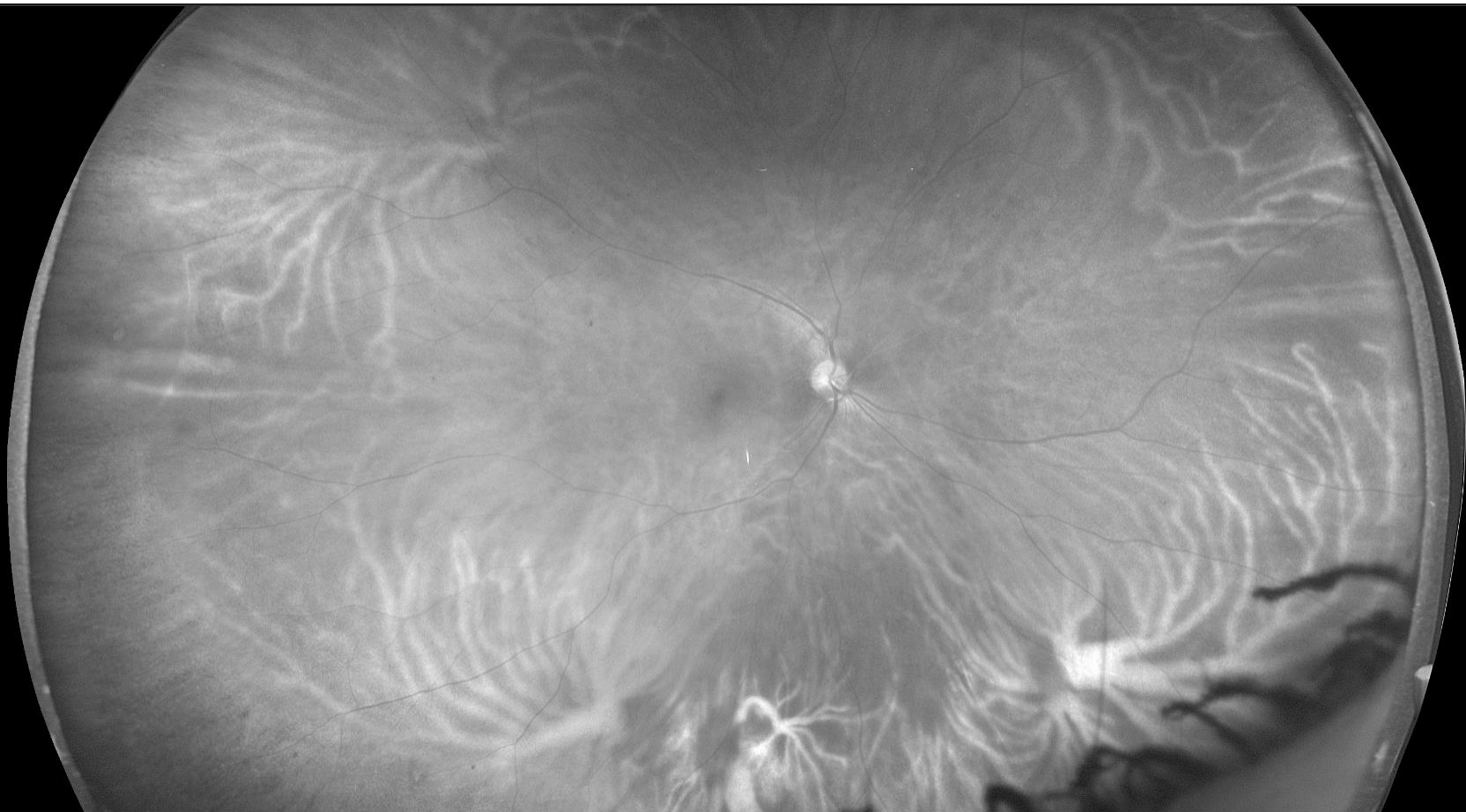
Optos Continental Demo
OPTOS, P200DTx
Lateralität: R
Red: 0%
Green: 100%
VORHER



Zoom: 2,44
Präsentation: Mehrere

1/1
11

Objective Red



Assessment

- All findings (SL, Refraction, OCT, IOP, Pentacam, Octopus Perimetry) were in age-related normal limits
- Retinal lesions need to be analyzed carefully
 - Foramina OD, with subretinal fluid present, indicates timely referral for prophylactic Laser treatment. The coagulation scar will prevent the retina from further detaching process

Plan

- Referral to retina specialist was initiated same day
 - Px was seen by retina specialist next day
 - laser therapy was performed same day

Plan



Case 2

- GH caucasian, female, age 50
- full optometric consultation due to vision loss
 - Macular Degeneration Dx age 30
 - massive decrease in VAcc OD>OS in the last years, more and more handicapped in the exercise of her profession as a physiotherapist (80%), especially administrative work is a big problem
 - Family Hx: negative
 - Systemic Hx: Menopause
 - Mx: Hormone Therapy (Menopause)

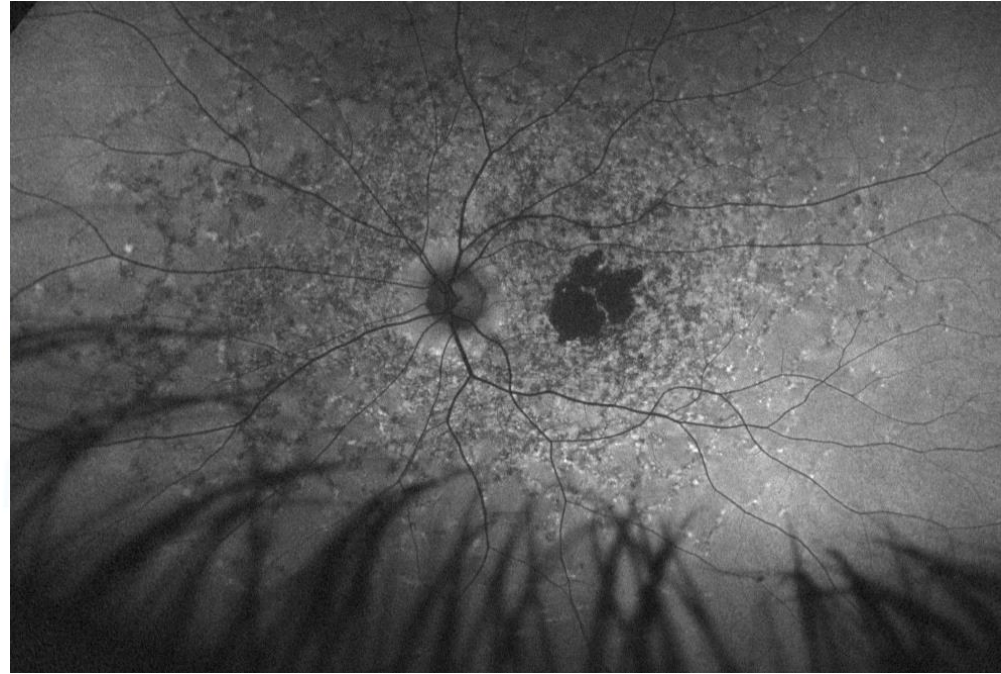
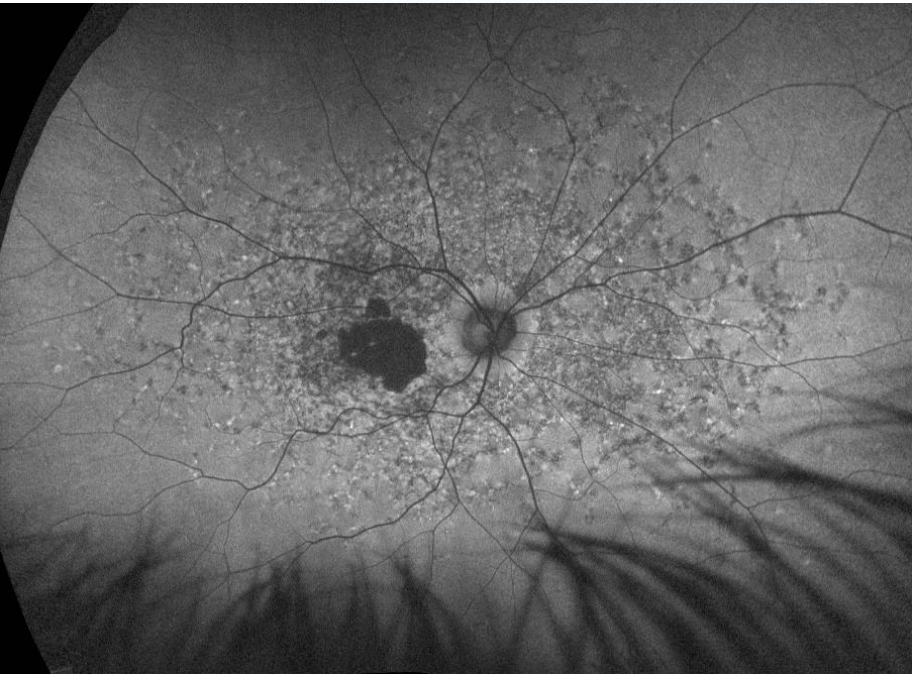
Objective



Objective



Autofluorescence



Assessment and Plan

- Retinal lesions need to be analyzed carefully
 - symmetrical distribution of retinal lesions are very uncommon for classic macular degeneration
 - no drusen at all
 - Dx Stargardts Disease, confirmed by retina specialist
- Plan
 - Referral to retina specialist was initiated for invalid registration and low vision aids

Practice Integration



Practice Integration

- Initial consultation always full optometry including widefield retinal imaging

Philosophie

Ihr Sehen bedingt ein komplexes Zusammenspiel von Optik, muskulärer Koordination und nervlicher Verarbeitung. Deshalb erheben wir bei der Erstkonsultation Ihren kompletten visuellen und optometrischen Status. Diese Analyse dient einerseits als Grundlage unserer jetzigen Beratung, andererseits auch zur Beurteilung von Veränderungen in der Zukunft, was ohne Grundlagenmessung nicht möglich ist. Die Analyse Ihrer Situation wird 60 – 90 Minuten in Anspruch nehmen.

Anmeldung und weitere Informationen [>](#)

Erstkonsultation _____ 250

KOMPLETTER VISUELLER STATUS 75

Kompletter visueller Status mittels Funktionstests, subjektiver Brillenglasbestimmung und digitaler Biomikroskopie des vorderen Augenabschnittes und der Augenmedien

KOMPLETTER OPTOMETRISCHER STATUS 175

Kompletter optometrischer Status inklusive Topographie, Pachymetrie, Biometrie (Augenlänge), Rebound-Tonometrie (Augendruck), Ophthalmoskopie, SLO Panorama Netzhautfotographie, Kohärenz-Tomographie (OCT) sowie Octopus-Perimetrie (Gesichtsfeld)

Practice Integration

- Single optometric measurement Optos widefield Retina Imaging according demand

Single optometric measurement
widefield retinal imaging inclusive
analysis _____ 91



www.eyeness.ch/downloads